



TOUCH SCREEN

3 PART DIFFERENTIAL HEMATOLOGY ANALYER

- Instrument for Complete Blood Count with 3 Part Differentiation of WBC Population
- 21 Parameters with 3 Histogram
- Built-in 10.4-inch LCD
- User interface via Touch Screen, External Key Pad and Mouse can also be attached using USB Port
- Automatic Start Up, Shut Down and Sample Analysis
- Auto Probe wiping facility to avoid carryover
- Floating discriminator for all 3 Blood Cells
- 9 User defined Normal Range
- Auto or Manual Calibration Facility
- Excellent Data Management using Self Protected Linux Operating System
- Storage of 1,00,000 Patient Results with Histogram
- Dedicated 4 QC Menu comprising of L-J, X-R, X-B & X
- 4 USB Port, for System Upgradation, Back-Up or to connect system with External Printer, Key Board, Mouse etc.
- Supports LIS/HIS & HL 7 protocol
- Automatic Maintenance with Alarm Setting
- Reagent inventory Management
- Close System with RFID Detection

Specifications:

Parameters:

WBC, LY#, MID#, GRAN#, LY%, MID%, GRAN%, RBC, HGB, HCT, MCV, MCH, MCHC, RDW-CV, RDW-SD, PLT, MPV, PDW, PCT, P-LCR, P-LCC
Dual transducer/chamber CBC mode with differentials of WBC, 21 parameters and 3 Histograms

Principles of Operation:

WBC/RBC/PLT : Electrical Impedance/Electrical Resistance/Counting/Sizing
Pulse Height detection method
HGB : Photoelectric colorimetry (cyanide free)

Aspiration Volume:

Whole blood 10µL, Pre-diluted 20µL

Analysis Mode:

Whole blood
Pre-diluted

Aperture Diameter:

WBC 100µm, RBC/PLT 68µm

Throughput:

60 samples per hour

Data Storage:

100,000 sample results with histograms

Alarm:

Error messages

Linearity:

Parameter	Linearity Range	Acceptable Limits
WBC	0 x 10 ⁹ /L - 10.0 x 10 ⁹ /L	≤±0.3 x 10 ⁹ /L
	10.1 x 10 ⁹ /L - 99.9 x 10 ⁹ /L	≤± 5%
RBC	0 x 10 ¹² /L - 1.00 x 10 ¹² /L	≤±0.05 x 10 ¹² /L
	1.01 x 10 ¹² /L - 9.99 x 10 ¹² /L	≤± 5%
HGB	0 g /L - 70 g/L	≤± 2 g/L
	71 g/L - 300 g/L	≤± 2%
PLT	0 x 10 ⁹ /L - 100 x 10 ⁹ /L	≤± 10 x 10 ⁹ /L
	101 x 10 ⁹ /L - 999 x 10 ⁹ /L	≤± 10%

Dilution Ratio:

	Whole blood	Capillary blood
WBC/HGB	1:232	1:400
RBC/PLT	1:40000	1:45000

User Interface:

10.4 inches color LCD displaying 21 parameters & histograms

QC & Calibration:

L-J,X-R,X-B four QC options
Manual and auto-Calibration

Dimension:

330mm x 440mm x 500mm

Power Requirement:

AC 100V --- 240V, 50/60Hz, 180W

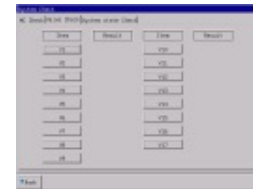
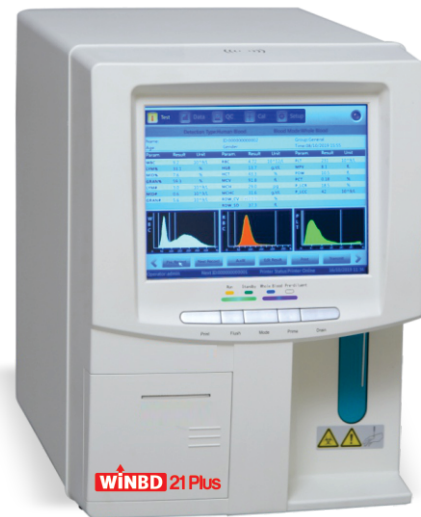
Input/Output:

4 USB Port
Internal 57mm thermal printer, Parallel Port

Electrical Safety Standards:

EN 61010-1:2010, EN 61010-2-101

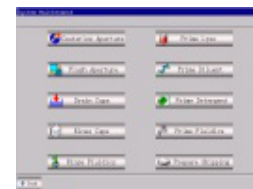
WINBD 21 Plus



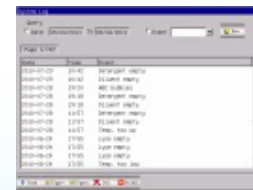
System check



Counting results



System Maintenance



System Log

Marketed in India by :

WINBD Biotech

Plot No. 435, Ramgarh, Panchkula - 134118,
Haryana, INDIA. | E-mail : info@winbdbiotech.com
Website : www.winbdbiotech.com
Customer Care : +91-98141 44143